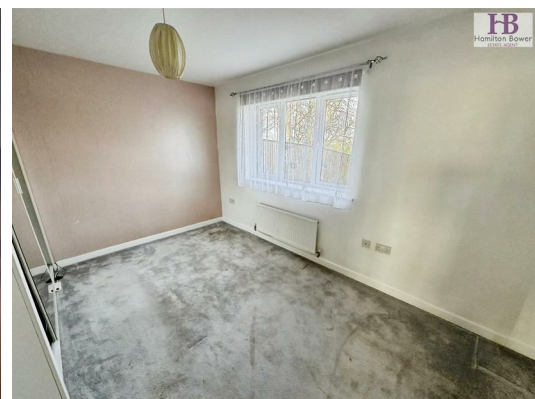




64 West Royd Avenue, Shipley, BD18 2PB £1,095

Available TO LET is this excellent THREE BEDROOM SEMI DETACHED BUNGALOW ideally located close to Shipley Town Centre with its array of amenities and transport links. The property offers spacious living to one floor and benefits from spacious room sizes and modern fixtures and fittings. There is a large rear garden and off road parking available.



EPC RATING - C

COUNCIL TAX BAND - B

GROUND FLOOR

ENTRANCE HALL

Spacious entrance hallway.

LOUNGE

Pleasant lounge with double glazed patio doors opening to the rear garden.

KITCHEN

Well fitted kitchen with modern units and fitted appliances.

BEDROOM

Good size double bedroom with wardrobes.

BEDROOM

A second double bedroom.

BEDROOM

A third bedroom which would be an ample single or home office.

BATHROOM

Modern fitted three piece suite in white with shower over bath.

EXTERNAL

Large rear garden with lawn and decking. Drive to the side providing off road parking.

